



MONTHLY MEMBERSHIP PROGRESS REPORT

District 2 S4

Results as of: 8/31/2014

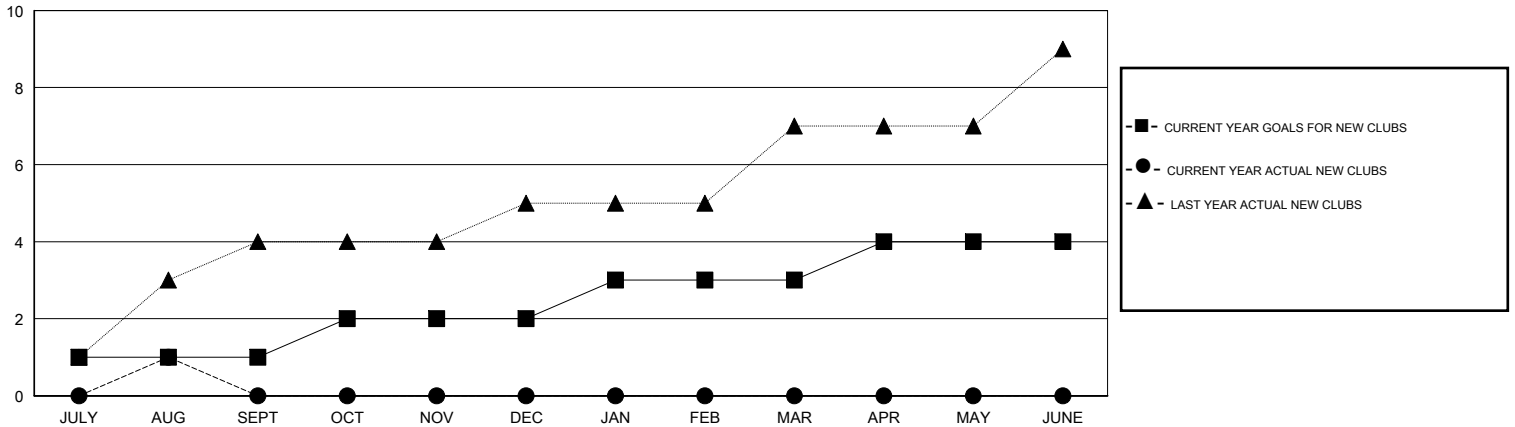
GMT: HAL GRIFFIN

LOCATION TEXAS

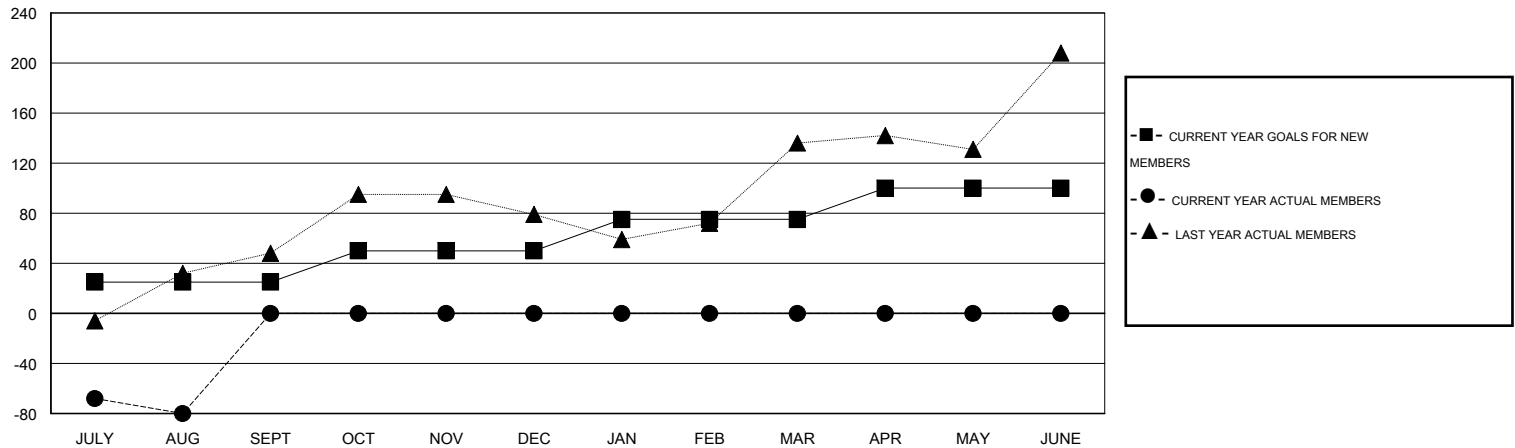
GMT CA 1

| Clubs | | | | | Members | | | | |
|-----------------------|---------------|------------------|----------------------|----------------------|-----------------------|-----------------|----------------------------|------------------------|----------------------|
| RESULTS FOR 2014-2015 | | | | | RESULTS FOR 2014-2015 | | | | |
| QUARTER | NEW CLUB GOAL | ACTUAL NEW CLUBS | ACTUAL DROPPED CLUBS | ACTUAL NET GAIN/LOSS | QUARTER | NEW MEMBER GOAL | ACTUAL TOTAL MEMBERS ADDED | ACTUAL DROPPED MEMBERS | ACTUAL NET GAIN/LOSS |
| JULY/AUG/SEPT | 1 | 1 | 1 | 0 | JULY/AUG/SEPT | 25 | 77 | 157 | -80 |
| OCT/NOV/DEC | 1 | 0 | 0 | 0 | OCT/NOV/DEC | 25 | 0 | 0 | 0 |
| JAN/FEB/MAR | 1 | 0 | 0 | 0 | JAN/FEB/MAR | 25 | 0 | 0 | 0 |
| APR/MAY/JUNE | 1 | 0 | 0 | 0 | APR/MAY/JUNE | 25 | 0 | 0 | 0 |

GOALS AND ACTUAL NEW CLUBS CUMULATIVE



GOALS AND ACTUAL MEMBERS CUMULATIVE



| | | | |
|------------------------|---|----------------------------|----------------|
| DROPPED CLUBS: 1 | 27 CLUBS OF 84 ADDED 1 OR MORE NEW MEMBERS | <u>GENDER DISTRIBUTION</u> | |
| <u>DROPPED MEMBERS</u> | | MALE | 1,488 (61.13%) |
| DECEASED | CLICK HERE FOR HEALTH ASSESSMENT DATA | FEMALE | 946 (38.87%) |
| CLUB CANCELLED | | FAMILY UNIT MEMBERS | 453 |
| OTHER | | HEAD OF HOUSEHOLD | 224 |
| TOTAL | | NON-HEAD OF HOUSEHOLD | 229 |